

Tinker's Creek Watershed Fact Sheet



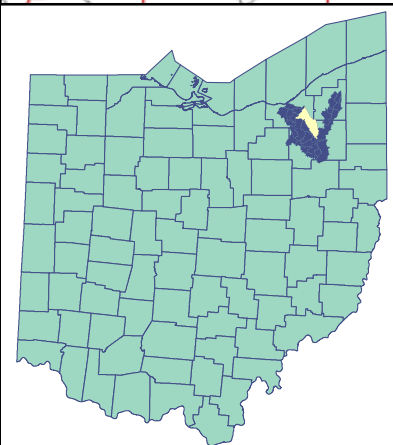
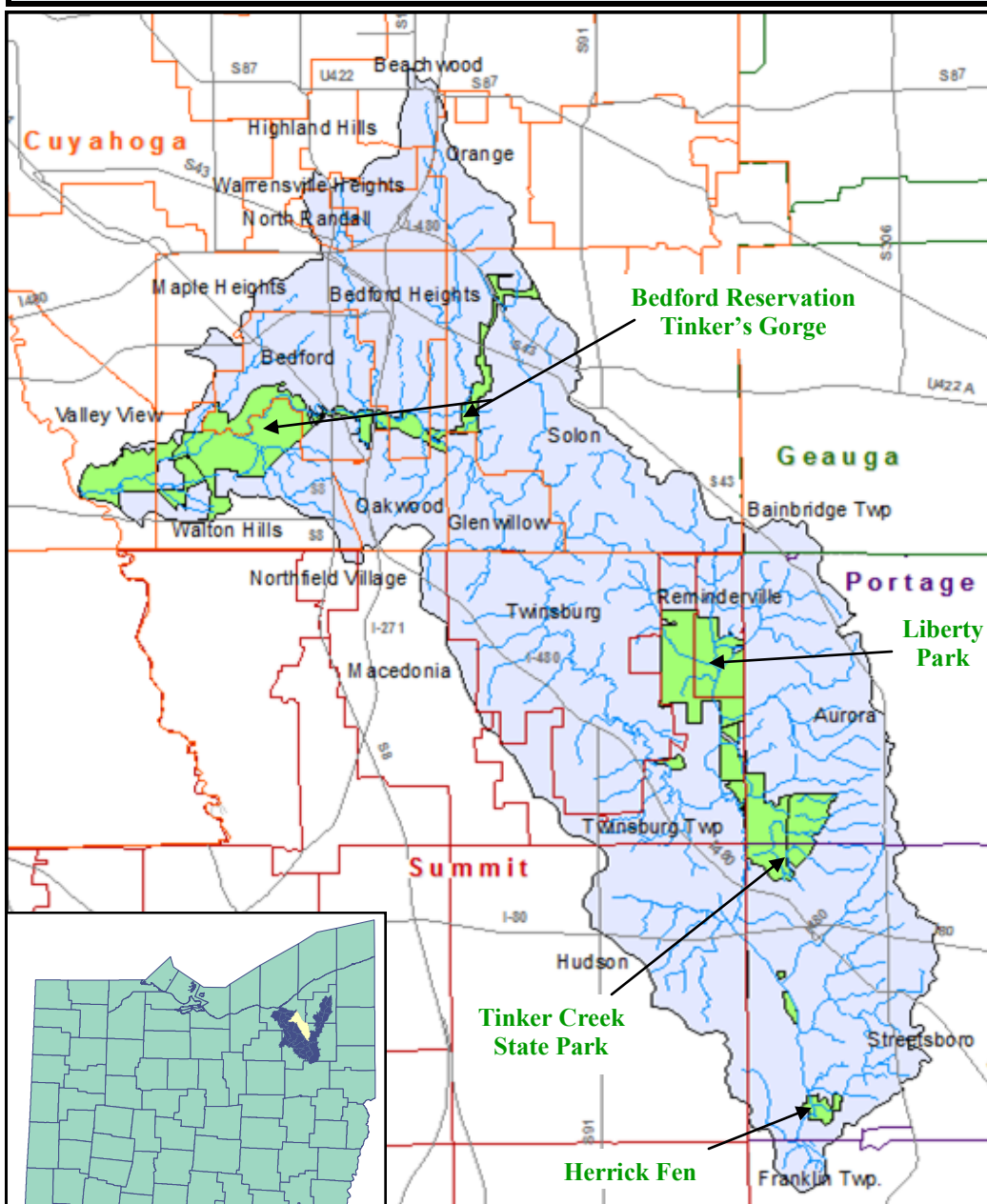
Tinker's Creek Watershed (TCW) Spans 4 Counties and 24 Communities!

Cuyahoga has 13 communities= 41.7% of county in TCW

Geauga has 1 community= 0.6% of county in TCW

Portage has 4 communities= 27.2% of county in TCW

Summit has 6 communities= 30.6% of county in TCW



Map key

- Tinker's Creek Watershed Boundary
- Managed Natural Areas



Tinker's Creek:

- watershed collects water from **96.4 square miles of land!**
- is the **largest tributary** to the Cuyahoga River and is **30 miles long!**

Did you know??

- Tinker's Creek watershed hard surface cover ranges from about 6 to 44%!
- As water moves across lawns and hard surfaces into storm drains, pollution is picked up and sent untreated to creeks and rivers which eventually empty into Lake Erie.
- Vegetated surfaces, like rain gardens, help water to soak in which allows for natural filtration of polluted runoff.
- The rate of extinction for freshwater animals is 5 times greater than that for land animals.

Only Rain Down the Drain!

***What is a watershed????
Flip to find out!***

This brochure was prepared by Tinker's Creek Watershed Partners (TCWP) under award NA11NOS4190075 from the National Oceanic and Atmospheric Administration, U.S. Department of Commerce through the Ohio Department of Natural Resources, Office of Coastal Management. The statements, findings, conclusions, and recommendations are those of the author(s) and do not necessarily reflect the views of the National Oceanic and Atmospheric Administration, Department of Commerce, Ohio Department of Natural Resources, or the Office of Coastal Management.

WATER—THE ULTIMATE RESOURCE!

What is a watershed? A watershed is an area of land that drains rain and snow into a common body of water such as a stream, river, or lake. Our landscape is made up of interconnected watersheds. **We all live in a watershed!**

Tinker's Creek Watershed Partners (TCWP)

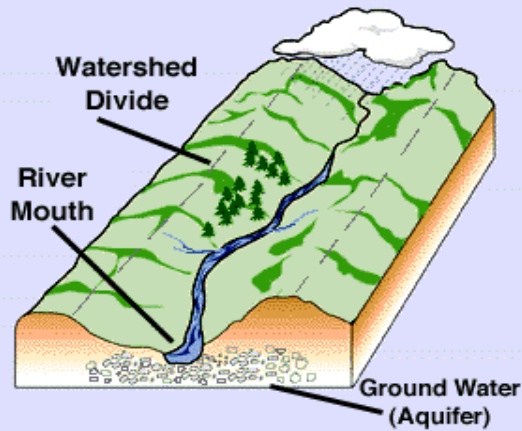
Non-profit organization established in 2006.

Mission: Protect and restore water quality and habitats of the Tinker's Creek watershed through community partnerships.

Become a TCWP member today and become a part of the solution to protect our water, our watershed, our future!

Visit www.tinkerscreekwatershed.org for more information!

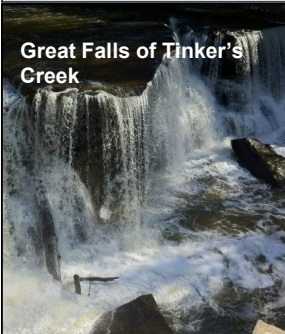
A Watershed



Natural Highlights of Tinker's Creek Watershed

- **Tinker's Creek State Nature Preserve**—located off of Old Mill Rd at the Summit/Portage County Border.
- **Scenic Overlook at Tinker's Creek Gorge**—located in the Cleveland Metroparks Bedford Reservation
- **The Great Falls of Tinker's Creek** is in Cleveland Metroparks Bedford Reservation Viaduct Park.
- **Herrick Fen** in the City of Streetsboro, 127 acres with rare plant species.

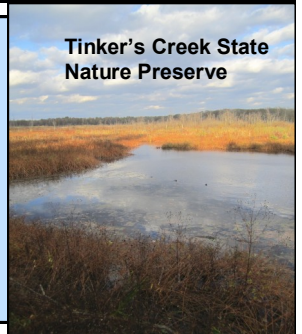
Great Falls of Tinker's Creek



Major issues impacting water quality

- **Excess nutrients**, such as phosphorous and nitrogen, caused by urban pollution and fertilizers from gardens, lawn and turf maintenance.
- **Loss of wetlands.** Wetlands help absorb and filter pollutants from our water and provide habitat for a diverse number of plants and animals.
- After major storms, high intensity stream flow (called **flashy flows**) increases **stream bank erosion**.
- **Loss of green space and habitat** surrounding streams that provide a buffer zone to filter pollutants and provide shelter/food for bugs and fish.

Tinker's Creek State Nature Preserve



How TCWP protects your water

- Secures funding for a full-time Watershed Coordinator.
- Provides educational outreach through:
 - In school education presentations
 - Community workshops and seminars
 - Newsletters, articles, website and social media.
- Annual Educational Watershed Events:
 - Watershed Festival
 - Mayors Luncheon
 - Stormwater Conference
- Provides Best Management Practices (BMPs) Grants for Member Communities.
- Forms partnership to strengthen protection of our communities waterways.
- Helps communities institute good stormwater practices by providing guidance and support.

How YOU can protect your water

- Don't litter and pick up litter where you see it.
- Keep grass clippings, leaves and other waste out of storm drains.
- Support policies that protect your local waterways, such as wetland protection codes.
- Reduce hard surfaces. Replace your driveway and walkways with permeable paving.
- Retain water on your property! Install a rain barrel and/or plant a rain garden.
- Pick up outside pet waste and put it in the trash.
- Plant native trees, especially near waterways.
- Wash your car on the lawn or at a carwash.
- Reduce toxic substance usage around your home and where you work.
- Never put motor oil, antifreeze, pet waste or other foreign materials in storm drains.
- Reduce your use of fertilizers, pesticides and other chemicals on your lawn and garden.
- Keep your lawn 3 inches or higher to aid in water filtration.

Get involved with your local conservation / watershed group and take part in keeping your watershed clean and healthy.



Search: Tinker's Creek Watershed Partners



@TinkersCreek_WP



www.tinkerscreekwatershed.org

Babette Oestreicher
Tinker's Creek Watershed Coordinator
PO Box 444
Twinsburg, Ohio 44087
216-789-6479

Email: babette@tinkerscreekwatershed.org
(email to sign up for e-Newsletter)

Template and some information provided by:

