

Tinker's Creek Watershed Fact Sheet



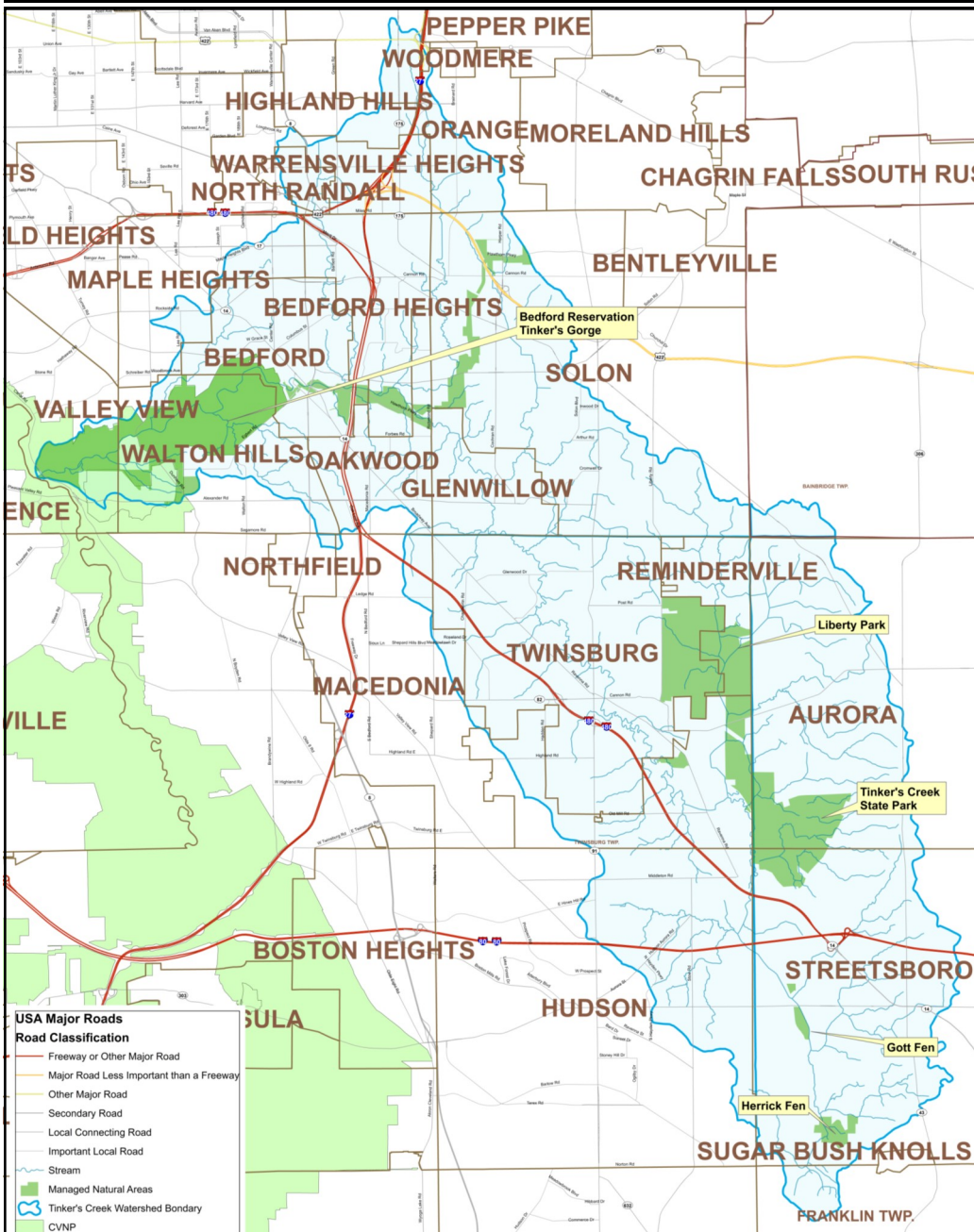
Tinker's Creek Watershed (TCW) Spans 4 Counties and 24 Communities!

Cuyahoga has 13 communities= 41.7% of TCW is in this county

Geauga has 1 community= 0.6% of TCW is in this county

Portage has 4 communities= 27.2% of TCW is in this county

Summit has 6 communities= 30.6% of TCW is in this county



Tinker's Creek:

- watershed collects water from **96.4 square miles of land!**
- is the **largest tributary** to the Cuyahoga River and is **30 miles long!**

Did you know??

- Tinker's Creek watershed hard surface cover ranges from about 6 to 44%!
- As water moves across lawns and hard surfaces into storm drains, pollution is picked up and sent untreated to creeks and rivers which eventually empty into Lake Erie.
- Vegetated surfaces, like rain gardens, help water to soak in which allows for natural filtration of polluted runoff.
- The rate of extinction for freshwater animals is 5 times greater than that for land animals.

**What is a watershed????
Flip to find out!**

Only Rain Down the Drain!

WATER—THE ULTIMATE RESOURCE!

What is a watershed? A watershed is an area of land that drains rain and snow into a common body of water such as a stream, river, or lake. Our landscape is made up of interconnected watersheds. **We all live in a watershed!**

Tinker's Creek Watershed Partners (TCWP)

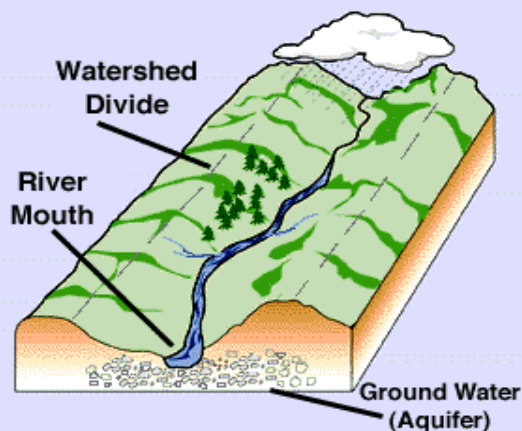
Non-profit organization established in 2006.

Mission: Protect and restore water quality and habitats of the Tinker's Creek watershed through community partnerships.

Become a TCWP member today and become a part of the solution to protect our water, our watershed, our future!

Visit www.tinkerscreekwatershed.org for more information!

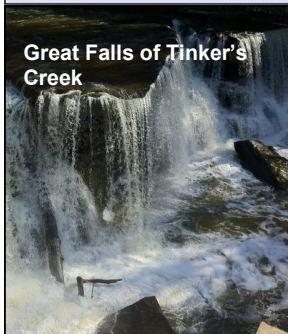
A Watershed



Natural Highlights of Tinker's Creek Watershed

- **Tinker's Creek State Nature Preserve**—located off of Old Mill Rd at the Summit/Portage County Border.
- **Scenic Overlook at Tinker's Creek Gorge**—located in the Cleveland Metroparks Bedford Reservation
- **The Great Falls of Tinker's Creek** is in Cleveland Metroparks Bedford Reservation Viaduct Park.
- **Herrick Fen** in the City of Streetsboro, 127 acres with rare plant species.

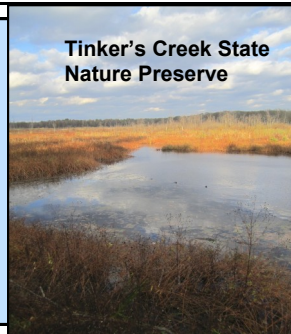
Great Falls of Tinker's Creek



Major issues impacting water quality

- **Excess nutrients**, such as phosphorous and nitrogen, caused by urban pollution and fertilizers from gardens, lawn and turf maintenance.
- **Loss of wetlands.** Wetlands help absorb and filter pollutants from our water and provide habitat for a diverse number of plants and animals.
- After major storms, high intensity stream flow (called **flashy flows**) increases **stream bank erosion**.
- **Loss of green space and habitat** surrounding streams that provide a buffer zone to filter pollutants and provide shelter/food for bugs and fish.

Tinker's Creek State Nature Preserve



How TCWP protects your water

- Secures funding for a full-time Watershed Coordinator.
- Provides educational outreach through:
 - In school education presentations
 - Community workshops and seminars
 - Newsletters, articles, website and social media.
- Annual Educational Watershed Events:
 - Watershed Festival
 - Mayors Luncheon
 - Stormwater Conference
- Provides Best Management Practices (BMPs) Grants for Member Communities.
- Forms partnership to strengthen protection of our communities waterways.
- Helps communities institute good stormwater practices by providing guidance and support.

How YOU can protect your water

- Don't litter and pick up litter where you see it.
- Keep grass clippings, leaves and other waste out of storm drains.
- Support policies that protect your local waterways, such as wetland protection codes.
- Reduce hard surfaces. Replace your driveway and walkways with permeable paving.
- Retain water on your property! Install a rain barrel and/or plant a rain garden.
- Pick up outside pet waste and put it in the trash.
- Plant native trees, especially near waterways.
- Wash your car on the lawn or at a carwash.
- Reduce toxic substance usage around your home and where you work.
- Never put motor oil, antifreeze, pet waste or other foreign materials in storm drains.
- Reduce your use of fertilizers, pesticides and other chemicals on your lawn and garden.
- Keep your lawn 3 inches or higher to aid in water filtration.

Get involved with your local conservation / watershed group and take part in keeping your watershed clean and healthy.



Search: Tinker's Creek Watershed Partners



@TinkersCreek_WP



www.tinkerscreekwatershed.org

Babette Oestreicher
Tinker's Creek Watershed Coordinator
PO Box 444
Twinsburg, Ohio 44087
216-789-6479

Email: babette@tinkerscreekwatershed.org
(email to sign up for e-Newsletter)

Template and some information provided by:

